

ArcGIS Living Atlas of the World

Tore Hustoft

19.06.24



Geodata - Introduction

- Technology company founded in 1988
- 200 employees in 3 locations;
 - Oslo (main office) - 167
 - Stavanger - 25
 - Trondheim - 8
- Distributor of ESRI software - ArcGIS, in Norway
 - Esri is worldleading provider of software - Geographic Information Systems (GIS)
- Geodata - software and services
 - Consulting, software, product and online services
- Myself

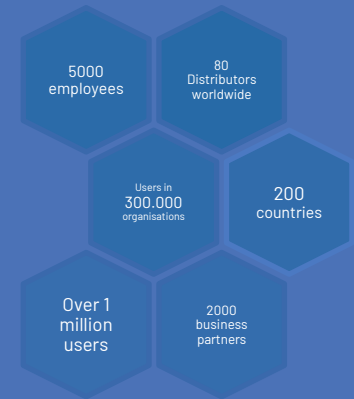


ESRI

- Global market leader in geographic information system (GIS software)
- Founded in 1969, main office in California
- Esri invests 30% of its annual revenue into R&D
 - Privately held
- ArcGIS – product platform
 - Used across various sectors



ESRI main office, Redlands, California



The ArcGIS System



Extending SDKs

Enterprise SDK
Pro SDK



Automation APIs

Python API
ArcPy

No-Code & Low-Code Builders

StoryMaps
Dashboards
Instant Apps
Experience Builder



Client APIs



JavaScript SDK
Native SDKs
.NET
Java
Swift
Kotlin
Qt

Game Engines
Unity
Unreal Engine
Open-Source
Esri Leaflet
REST JS
MapLibre GL JS
OpenLayers
CesiumJS
Calcite Design System
REST

Mapping

Field Operations

Spatial Analysis
& Data Science

Imagery &
Remote Sensing

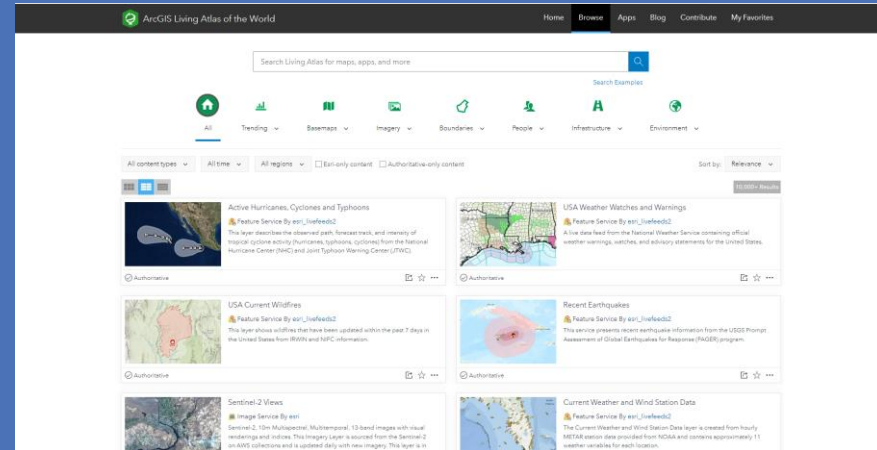
Data
Management

Real-Time
Visualization &
Analytics

3D Visualization
& Analytics

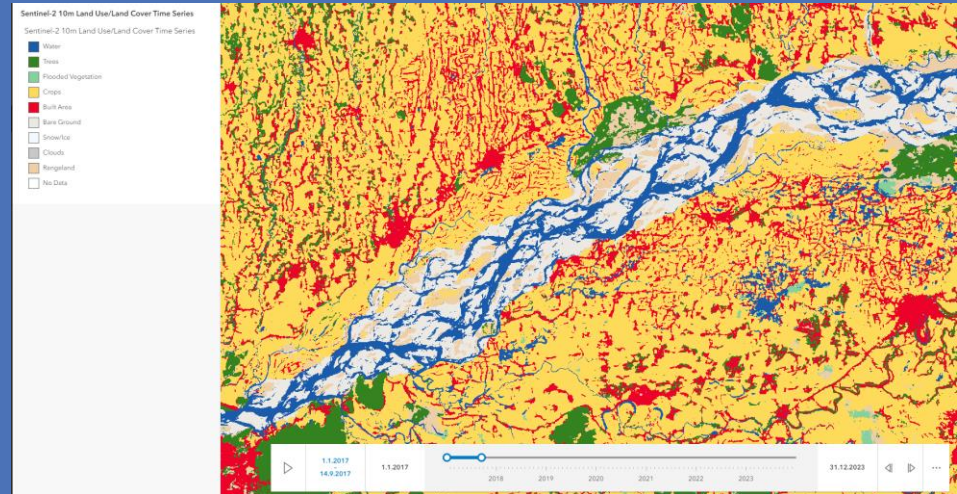
ArcGIS Living Atlas of the World

- Foremost collection of geographic information from around the globe
- Includes maps, apps and data layers
- Data services are kept up-to-date



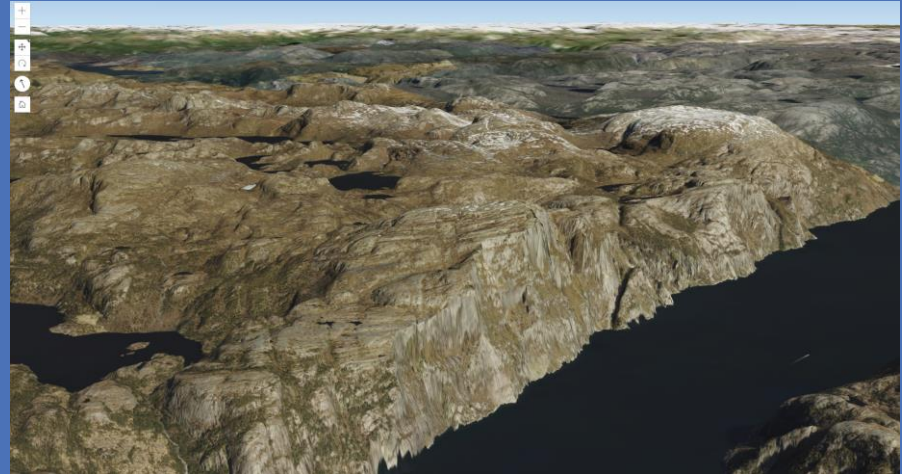
Sentinel-2 10-Meter Land Use/Land Cover

- Land use changes rapidly. So should our maps.
- 10-meter annual map of Earth's land surface from 2017-2023.
- AI applied to the entire Sentinel-2 collection
- Output provides a 9-class map of the surface
- Available DLPK
- [Land Cover Explorer](#)



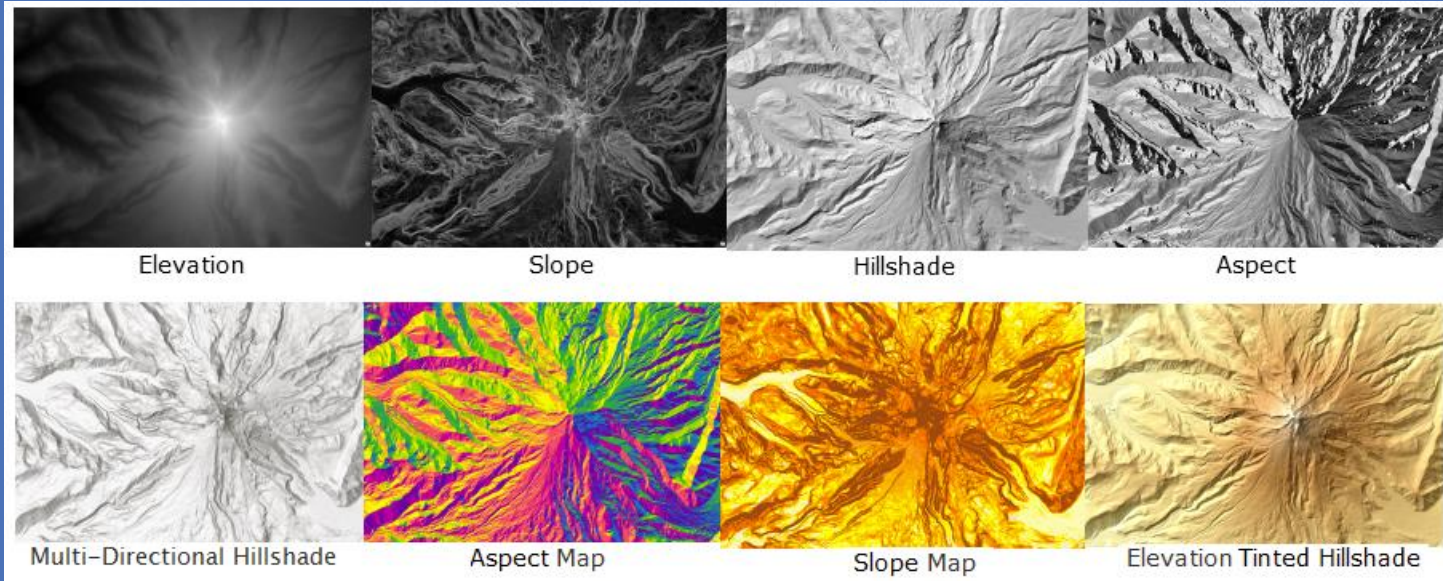
World Elevation/Terrain

- Updated quarterly with high resolution data from federal agencies, open sources, and community maps program.
- Allows query, identify and export image requests.
- Sources: Airbus, USGS, NGA, NASA, CGIAR, NLS, OS, NMA, Geodatastyrelsen, GSA, GSI and the GIS User Community
- [Elevation Coverage Map](#)



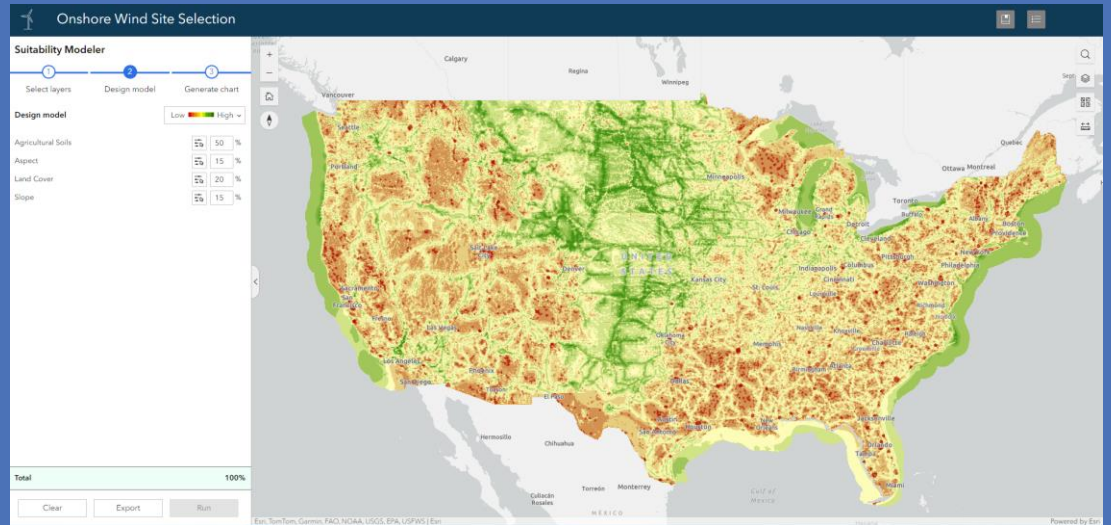
World Elevation/Terrain

- Other server-side functions defined on this service:



Suitability Analysis

- Identify best location based on weighting of criterias
- Wind Site Selection



Thank You

Tore Hustoft

 /geodataAS

 /geodataAS

 /company/geodata-as

geodata.no

